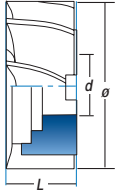


Ref. **4040**

FRESA FRONTAL AGUJERO HSSE 5% CO ACABADO

Finishing HSSE 5% Co Milling Cutter
Fraise à Trou HSSE 5% Co Finition



HSSE 5% Co	DIN 1880 N	ISO 2586	30°	Tol. Ø (js16) d (H7) L (K16)		
---------------	---------------	-------------	-----	------------------------------------	--	--

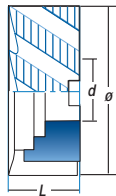
D mm	L mm	d mm	Z	N° Art. 5% Co	€
40	32	16	8	55557	93,87
50	36	22	8	55575	129,15
63	40	27	8	55593	176,45
80	45	27	10	55611	249,87
100	50	32	12	55647	402,34
125	56	40	14	55665	646,10
*160	63	50	16	55674	1154,73

* Ø > 125 mm bajo demanda / upon request / sur demande

Ref. **4080**

FRESA FRONTAL AGUJERO HSSE 5% CO DESBASTE GRUESO

Coarse Roughing HSSE 5% Co Milling Cutter
Fraise à Trou HSSE 5% Co Ebauche



HSSE 5% Co	DIN 1880 NR	ISO 2586	30°	Tol. Ø (js16) d (H7) L (K16)		
---------------	----------------	-------------	-----	------------------------------------	--	--

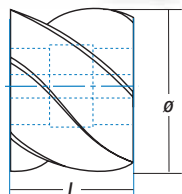
D mm	L mm	d mm	Z	N° Art. 5% Co	€
40	32	16	6	77752	136,07
50	36	22	6	77754	168,97
63	40	27	8	77755	223,97
80	45	27	8	42863	328,92
100	50	32	10	42866	542,70
125	56	40	12	42869	920,69
*160	63	50	14	42872	1597,56

* Ø > 125 mm bajo demanda / upon request / sur demande

Ref. **4010**

FRESA FRONTAL 2 CORTES HSSE 5% CO DESBASTE MEDIO

Roughing & Finishing HSSE 5% Co Shell End Mill
Fraise 2 Tailles HSSE 5% Co Semi-Finition



HSSE 5% Co	DIN 884 N	ISO 2584	30°	Tol. Ø (js16) d (H7) L (js16)		Fresa Planear Plain Milling Cutter Fraise Cylindrique à Surfacier
---------------	--------------	-------------	-----	-------------------------------------	--	---

D mm	L mm	d mm	Z	N° Art. 5% Co	€
50	40	22	8	53952	110,33
50	63	22	8	53961	117,58
50	80	22	8	53970	175,27
63	50	27	8	54015	154,30
63	70	27	8	54024	187,73
80	63	32	8	54096	260,05
80	100	32	8	54123	382,29
100	70	40	10	54141	404,61